



WinSPF Software Version 4.1

Optometrics has new and expanded capabilities for its popular WinSPF software. With the release of Version 4.1, Optometrics continues to support the needs of the SPF measurement community by meeting or exceeding the expanded requirements of FDA 21 CFR.

These updates to WinSPF will help maintain Optometrics' leadership role in in-vitro SPF measurement.



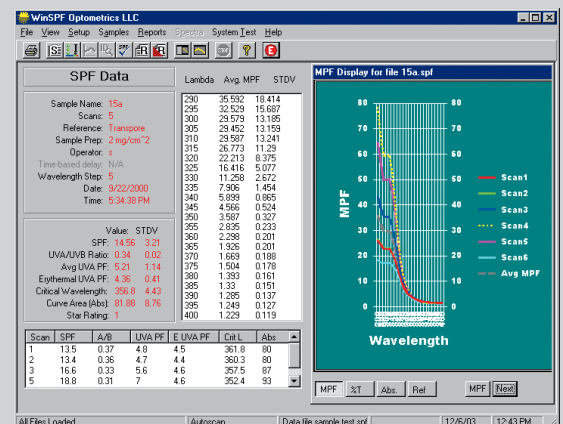
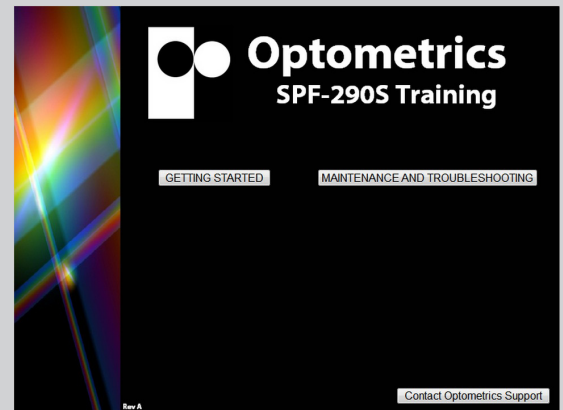
In addition to these features, Optometrics now offers a sample assembly locator plate and a new sample holder for PMMA plates.

Features Included in the New V4.1 Software:

- Compliant with the new FDA 21 CFR
- Compliant with the AATTC-183 fabric standard
- Compliant with the AS-NZS 4399 sun protective clothing standard
- Audio visual training aids

New Features

Audio Visual Training Aid



Software Pricing Schedule

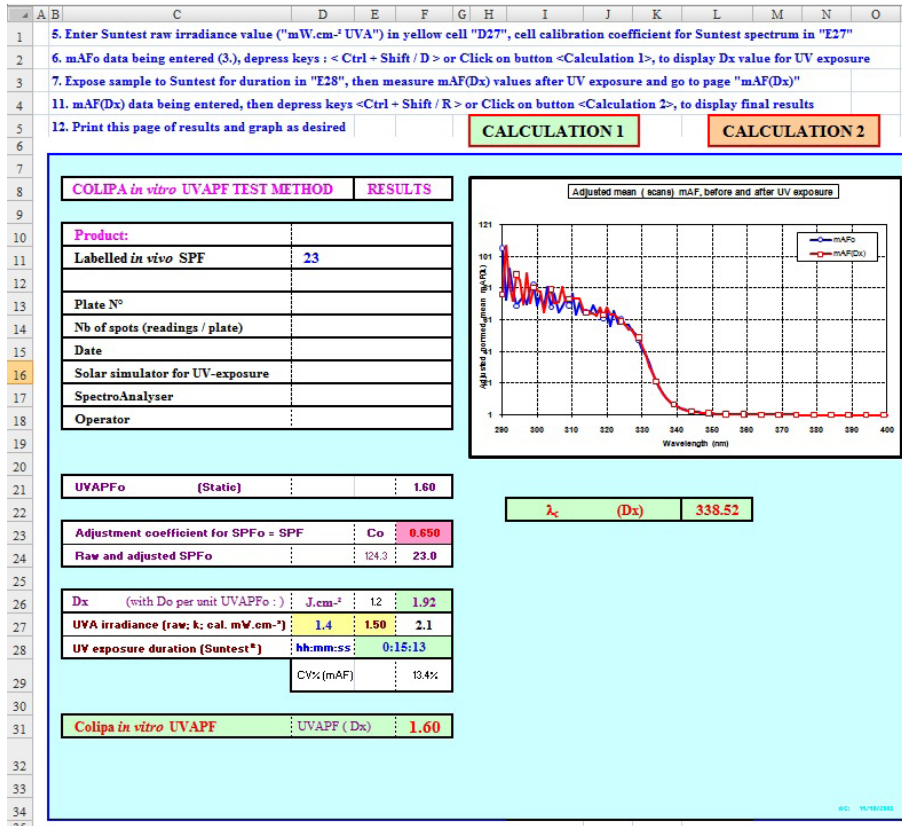
Catalog No.	Description	Price
8-5096	WinSPF V 4.1 Includes Validation Kit	\$1920.00
8-5097	Upgrade from WinSPF 3.x to Win SPF V 4.1 Includes Validation Kit	\$1545.00
8-5098	Upgrade from WinSPF 4.0 to Win SPF V 4.1	\$495.00

New Accessories Pricing Schedule

Catalog No.	Description	Price
8-5088	Locator Plate Assembly	\$ 149.00
8-5089	Sample Holder for PMMA	\$ 59.00
8-5100	Set of 3 Sample Holders for PMMA	\$ 149.00
8-5099	Set of 3 PMMA Plates, Roughness 2µ	\$ 25.00

Software upgrades are delivered on a CD-Rom and include a complete Help System, operating manual, audio visual training aids and Colipa spreadsheet.

Colipa Spreadsheet



The screenshot shows a spreadsheet interface with a grid of cells containing instructions and data. Below the grid is a summary window titled "COLIPA in vitro UVAPF TEST METHOD RESULTS".

Product Information:

- Labelled in vivo SPF: 23
- Plate N°:
- Nb of spots (readings / plate):
- Date:
- Solar simulator for UV-exposure:
- SpectroAnalyser:
- Operator:

UVAPF Results:

- UVAPFo (Static): 1.60
- Adjustment coefficient for SPFo = SPF: Co = 0.650
- Raw and adjusted SPFo: 124.3, 23.0
- Dx (with Do per unit UVAPFo): J.cm⁻²: 12, 1.92
- UVA irradiance (raw; k; cal. mW.cm⁻²): 1.4, 1.50, 2.1
- UV exposure duration (Suntest®): hh:mm:ss: 0:15:13
- CV% (mAF): 13.4%
- Colipa in vitro UVAPF: UVAPF (Dx): 1.60

Graph: Adjusted mean (scans) mAF, before and after UV exposure. The graph plots Adjusted mean (mAF) on the y-axis (log scale from 1 to 121) against Wavelength (nm) on the x-axis (from 290 to 400). Two curves are shown: mAFo (blue line with circles) and mAF(Dx) (red line with squares). The mAF(Dx) curve shows a significant drop at approximately 338.52 nm, which is labeled as λc (Dx).

Contact Information:
 phone: 978-772-1700
 email: sales@optometrics.com
 web: <http://www.optometrics.com>
 fax: 978-772-0017